

# Val-U-Therm® Roof Panels



**Val-U-Therm®**  
Future Proof Solutions

Large format Val-U-Therm® panels offer a cost-efficient solution for pitched/flat roofs with excellent insulation performance. These are off-site manufactured, use factory injected insulation derived from recycled vegetable oil and are suitable for masonry, timber frame and other structures. Roof lights can be factory fitted if required.

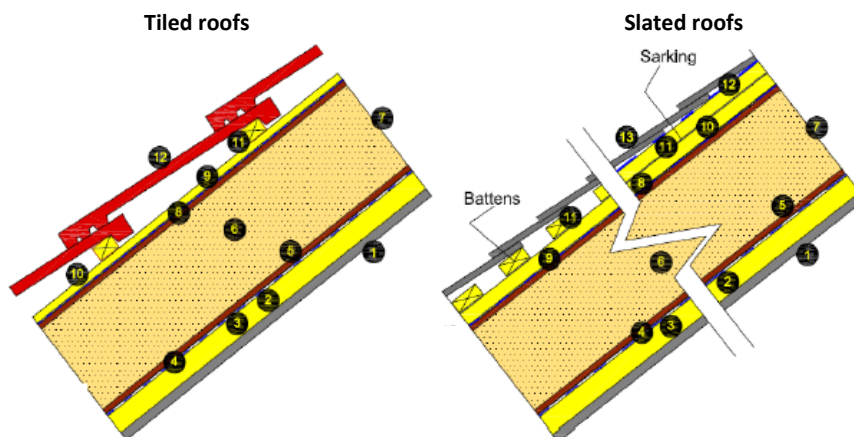
## Val-U-Therm® roof panels are:

- ✔ Ideal for room-in-the-roof applications
- ✔ A robust, cassette-based timber structure
- ✔ Uses solid timber joists or integrated I-joists for longer spans
- ✔ Installed in the traditional ridge to eaves orientation
- ✔ BBA accredited building system (walls, floors & roofs)
- ✔ Innovative system simply slots together requiring a small installation team
- ✔ Can be used for pitched and flat roofs with traditional thatch, slates & tiles, with metallic finishes & modern synthetic coverings and 'Green roof' systems.

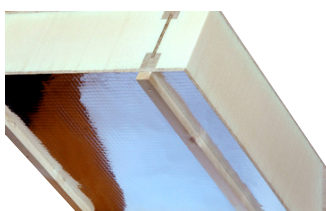


## Typical Configurations:

- 1 Plasterboard
- 2 Service battens
- 3 Service void
- 4 Reflective vcl
- 5 OSB
- 6 Injected insulation
- 7 Rafter
- 8 OSB
- 9 Standard roofing breather membrane
- 10 Counter battens
- 11 Softwood sarking / battens
- 12 Tiles / slates
- 13 Roofing membrane (where sarking is used)

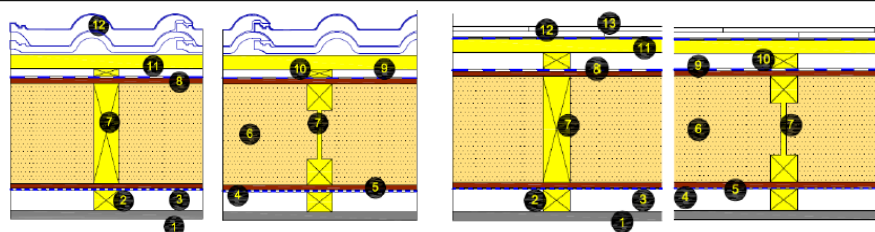


## Thermal Performance:



	Solid timber rafter with tiles (RT)				Solid timber rafter with slates (RS)			
	V140RT	V184RT	V220RT	V235RT	V140RS	V184RS	V220RS	V235RS
Rafter Size (mm)	140	184	220	235	140	184	220	235
U-Value (W/m <sup>2</sup> K)	0.19	0.15	0.13	0.12	0.19	0.15	0.13	0.12

	I-rafter with tiles (IRT)			I-rafter with slates (IRS)		
	V220IRT	V245IRT	V300IRT	V220IRS	V245IRS	V300IRS
I-Rafter Size (mm)	220	245	300	220	245	300
U-Value (W/m <sup>2</sup> K)	0.12	0.11	0.09	0.12	0.11	0.09



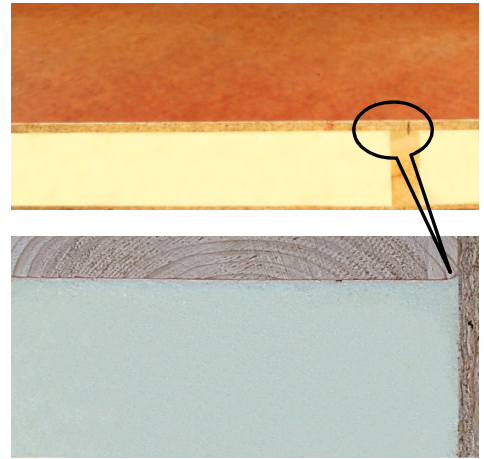
## Typical Availability:

Rafter depth selection depends on achieving a cost-effective balance between clear span and thermal performance requirements. A wide range of options are available:

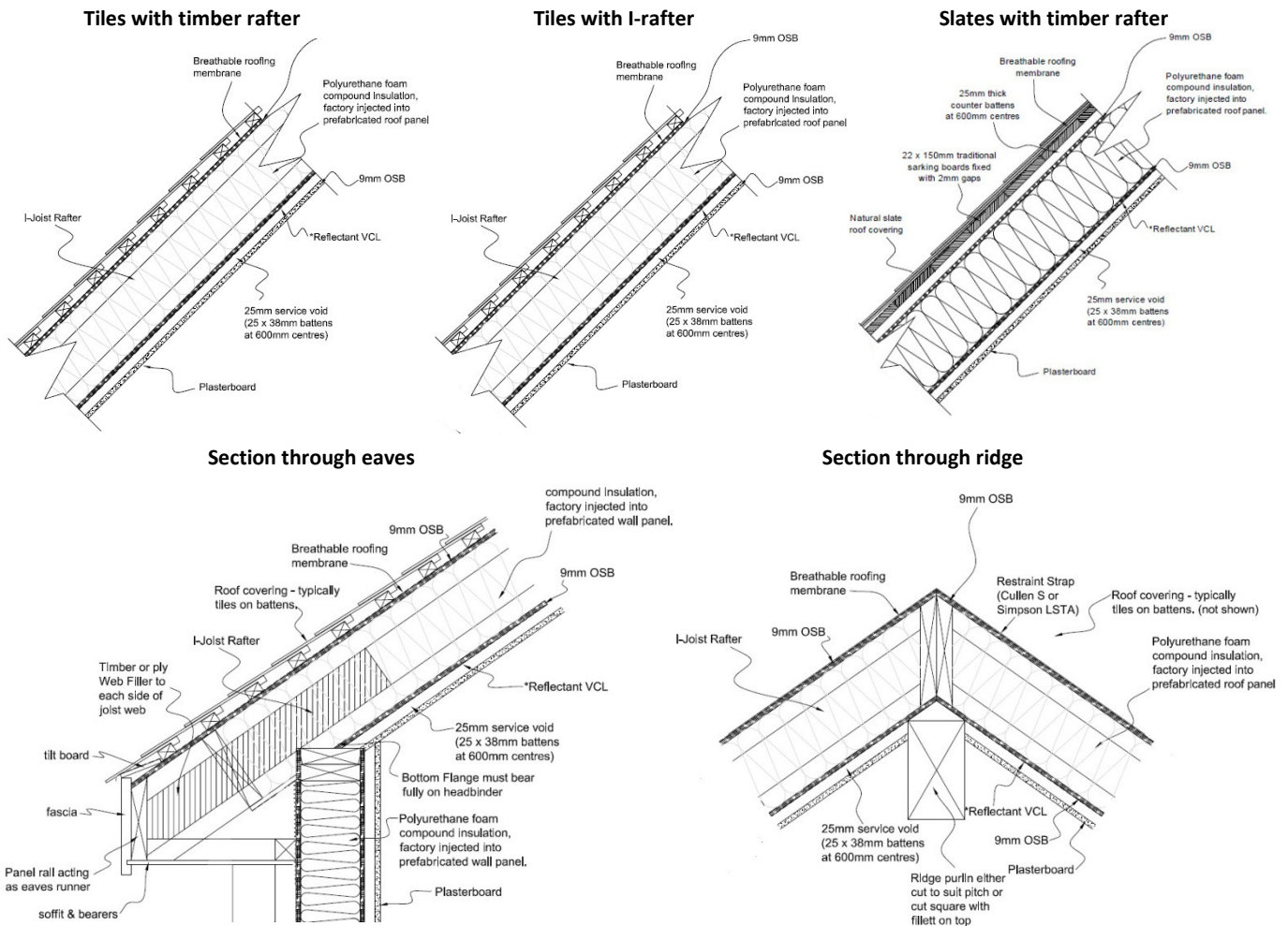
- ✔ Panel lengths up to 10m long & 3.2m wide
- ✔ Solid timber joists @ 140mm, 184mm, 220mm & 235mm
- ✔ I-joists @ 195mm, 220mm, 245mm, 300mm up to 450mm

**Technical Credentials:**

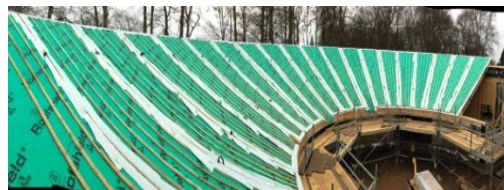
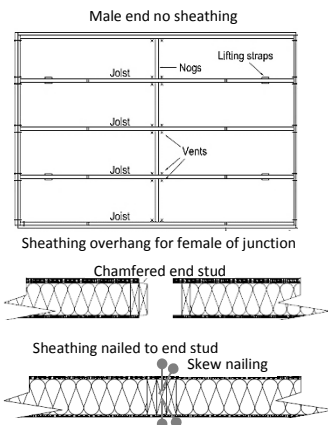
- ✔ From 3m to 12m clear spans
- ✔ Excellent U-values (0.10 W/m<sup>2</sup>K) economically achieved
- ✔ Factory controlled injected insulation that fills into every corner
- ✔ Layouts available to minimise thermal bridging - third party accredited
- ✔ Air tightness to < 1 m<sup>3</sup>/m<sup>2</sup>h@50pa - integrated with Val-U-Therm® System
- ✔ Meets existing and forthcoming Regulations, Codes and Standards
- ✔ Simplified assembly reduces reliance on construction skills
- ✔ Green Guide A/A+ sustainability and environmental credentials
- ✔ Sustainably sourced FSC/PEFC chain of custody timber



**Typical Detailing:**



**Typical panel & junction**



For further details, please contact:

Val-U-Therm Limited      Tel: +44 (0) 7572 860014  
 Inverurie Business Park  
 Souterford Avenue  
 Inverurie  
 Aberdeenshire AB51 0ZJ Email: [info@valutherm.co.uk](mailto:info@valutherm.co.uk)



or visit [valutherm.co.uk](http://valutherm.co.uk)